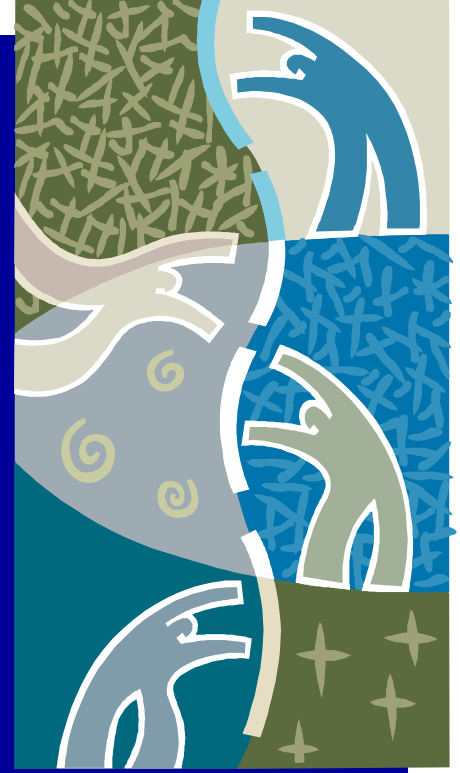


Wamego Chamber of Commerce / Mainstreet
529 Lincoln Ave.
Wamego, KS 66547



Wamego Chamber of Commerce / Mainstreet
529 Lincoln Ave.
Wamego, KS 66547

Annual meeting 2010



“Laying a Strong Foundation”

Wamego Chamber of
Commerce / Mainstreet

Saturday, January 23, 2010
Social hour begins at 5 p.m.

@ Black Jack Hills



Our 2010 Annual Meeting will mark the laying of a strong foundation - join us.

Each year we gather together the membership to recognize outgoing and incoming board members, honor the community's volunteering achievements, and set the game plan for the new year.

For the 2010 season, we're glad to have you on our team and want to focus on Wamego and what it will take to lay a strong foundation for the future of our community.

Featured Speaker

"Turning a Program Around"

*Frank Martin, Head Coach
K-State Men's Basketball Program*

Coach Martin, in his third year at the helm of the K-State program, knows how to strengthen a team's foundation.

As our featured speaker, Coach Martin will share with us his experiences turning the K-State Men's Basketball program around and how we can apply this to our everyday business practices.

Schedule of Events

Social Hour
5-6 p.m.

Welcome & Invocation
6:15 p.m.

Dinner
6:15-7:15 p.m.

Awards & Board Recognition
7:15-7:45 p.m.

Sponsorship Opportunities **Price**

Table Sponsor – Includes displaying your business material in the theme of your favorite team. \$50

Feel free to use your imagination – best decorated table receives the Cindy Blanchard "Best Table Décor Award"!

Drink Sponsor – Includes your business logo displayed at the bar thanking you for your contribution to the evening. \$100

RSVP for Social Hour & Dinner \$25 / person
Attendees Names:

TOTAL:

Please RSVP by Tuesday, January 19, to reserve your "front-row seat" as seating is limited!

*RSVP by mail or by emailing
wchamber@wamego.net*

Name / Business

Address

Phone

E-mail

Method of Payment

Check Visa / MasterCard

Bill Me

Credit Card No. *Exp. Date*

Signature